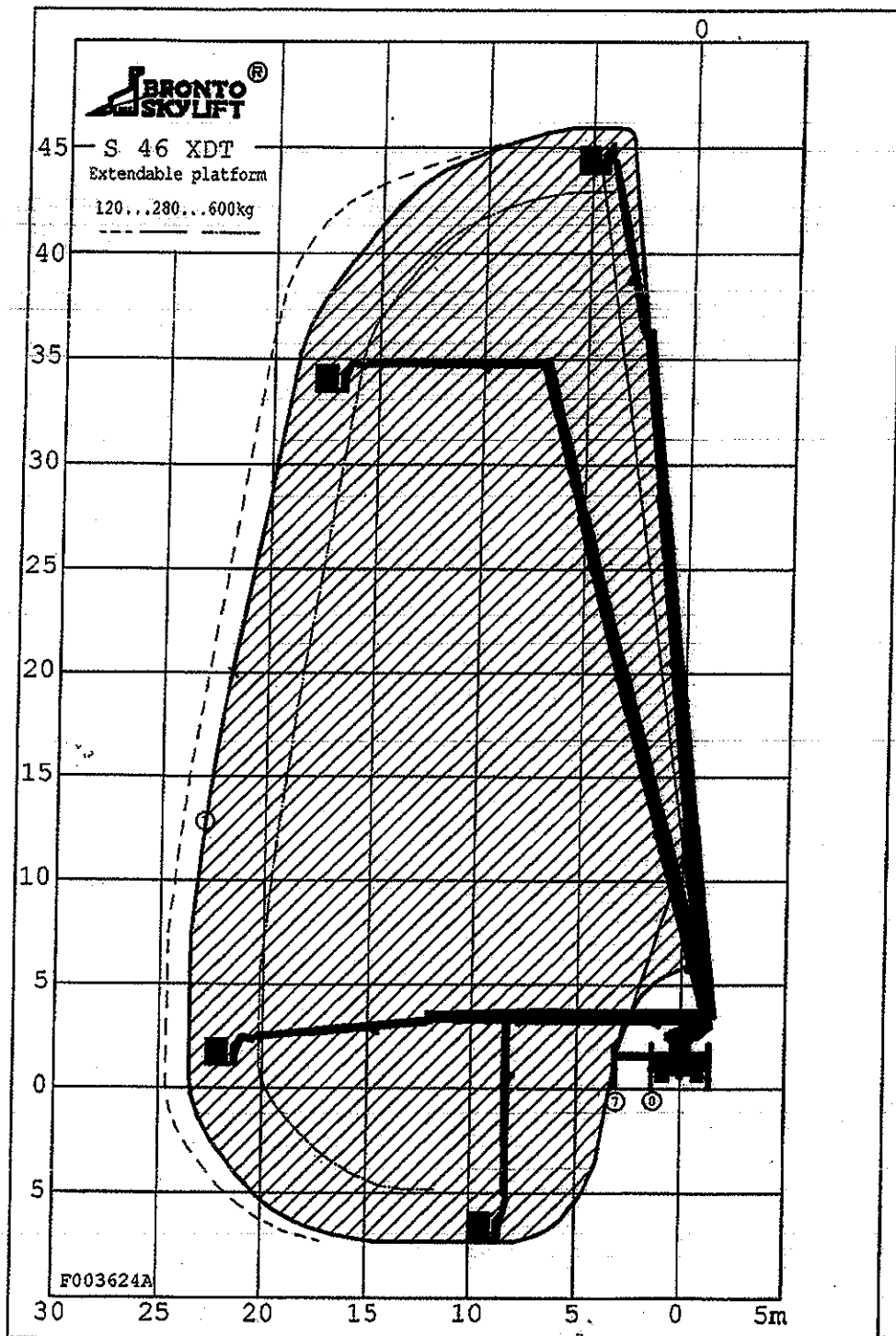


OUTREACH DIAGRAMS



TECHNICAL DATA

Safe working load max.	: 600 kg
Max. permitted wind speed	: 12.5 m/s
Typical GVW	: 18.0 ton
operating weight min.	: 17.5 ton
Outrigger width and lenght c/c	
- normal jacking	: 6.2/6.1 m
- narrow jacking	: 2.8/6.1 m
- one side jacking	: 4.5/6.1 m
Calculation code	:

TECHNICAL DATA**WORKING RANGE**

Max. working height.....	45,5 m
Max. height to cage floor.....	43,5 m
Max. side outreach at cage rail.....	24,5 m
Max. downreach to platform floor (below the ground level).....	6,5 m

WORKING CAGE LOAD

Max. cage load.....	700 kg (8 Persons + 60 kg)
Cage loads.....	120 kg - 700 kg
Max. cage load with extendable working cage.....	600 kg (120 kg - 600 kg)
Max. side force.....	400 N

ROTATION

Continuous.....	+/-280°
-----------------	---------

TRAVELLING DIMENSIONS

Overall length.....	~10,5 m
Overall height.....	~3,7 m
Overall width.....	<2,5 m
Skylift weight.....	~11,2 t

OUTRIGGERS

Max. outrigger width (C/C).....	6,2 m
Max. outrigger force.....	150 kN
Max. footplate pressure.....	8,3 kg/cm ²
Max. footplate pressure with plywood groundplate (50x650x750).....	3,1 kg/cm ²

HYDRAULIC SYSTEM

Main pump output.....	~120 l/min
Battery pump output.....	~10 l/min
Main pressure.....	200 bar
Emergency operation pressure.....	200 bar
Adjustment of cylinder load control valves.....	345 bar
Reservoir capacity.....	~250 l
Total system capacity.....	~330 l

GENERAL

Operating temperature range.....	- 25° - + 40° C
Noise level.....	<85 dB
Max. wind speed.....	12,5 m/s